

INSPIRATIONAL SPACES

THE EDUCATION INTERIORS EXPERTS



CONTENTS

- 10 EXETER SCHOOL
- 14 NEW HALL SCHOOL
- 16 HAYES SCHOOL
- 20 GREY COURT SCHOOL
- 22 BEXHILL ACADEMY
- 24 KNIGHTSBRIDGE SCHOOL
- 26 ST EDMUND'S SCHOOL
- 28 SHERBORNE GIRLS SCHOOL
- 30 KING'S HOUSE SCHOOL
- 32 TRURO HIGH SCHOOL FOR GIRLS
- 34 THE STONEHENGE SCHOOL



WELCOME

Great ideas are meant for sharing so we thought we would show you what we have been up to in schools and colleges near you...

Driven by our ever-increasing desire to advance school facilities and maximise the potential from every student, Westcountry Group is a leading supplier of educational refurbishments and furniture in the South of England. Our customers love us because we:

- Offer free and informal consultations to discover your needs and help you achieve your dreams for your school.
- Combine over 45 years' experience with your visions to maximum effect - all within your budget.
- Deliver and install our concepts within your timescales and to your complete satisfaction. We genuinely care about the results - whatever size the project is.
- Supply, assemble, install the furniture, and take away the packaging - there are no flat-pack horror stories here!
- Leave your school clean and tidy - leave the clearing up to us!

So, grab a coffee, take a good look through our portfolio, and see what we could do for your school!

Then give us a no-obligation call to discuss your needs, however great or small, whether it be space and storage or expanding pupil numbers, and we will see how we can be of assistance.

Still stuck for inspiration? Check out our website, westcountrygroup.com for more projects and ideas.

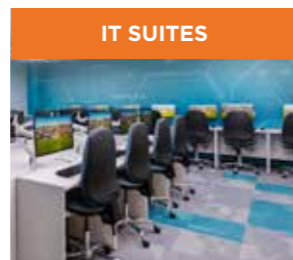
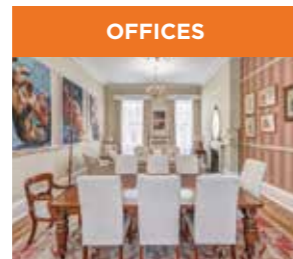
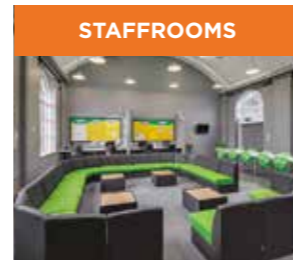
Kind regards,

Miles Liesching

Miles Liesching
Managing Director

OUR SERVICES

We refurbish and furnish...



Creating inspirational spaces for your school

We will look after your...

- FURNITURE**
- CEILING**
- WALL GRAPHICS**
- PLUMBING**
- ELECTRICS**
- FLOORING**

And you will enjoy all this too...

- FREE SITE VISITS**
- 3D AND 4D VIRTUAL REALITY DESIGNS**
- CAPTIVATING MOODBOARDS**
- COMPLETE PROJECT MANAGEMENT**
- OLD FURNITURE REMOVAL & RECYCLING**



THE FOUR STEPS TO A SUCCESSFUL PROJECT

1

DEFINE

We will listen carefully as you share your ideas and desired outcomes with us and we will help you get your ideas down on paper.

2

DESIGN

We will develop a design built specifically for your school that addresses the key important points and fully meets your needs.

3

INSTALLATION

Our teams of interior designers, project managers and fitters work closely together to ensure each project is delivered within your budget and time requirements, leaving you to focus on key managerial tasks.

4

HANDOVER

Once everything is perfect, we hand over the project for you and your staff to enjoy and we will be available for on-going support with our after-sales service.



For a FREE site visit and space plan call our experienced team today on **0330 030 0330** or email sales@westcountrygroup.com

A TRIED AND TRUSTED APPROACH



Once your brief is agreed, our talented interior design team will set to work to create a space that exceeds your expectations, but not your budget.



We will develop plans, sections, elevations, 3D and 4D visuals to bring your new space to life! We will help you visualise your finished interior before committing. You can 'walk around' in your new space before it exists!



Working in accordance with the latest Building Regulations, Health and Safety Legislation and design trends, we will develop inspiring spaces that are cost-effective and highly functional.



OUR INTERIOR DESIGN SERVICE



A unique 'Total Interiors' managed service, offering you everything you will need on the journey from an initial site visit right through to project completion.



One company, one point of contact with our all-in-one project management, interior design, 3D and 4D space-plan capabilities and more.



A dedicated account manager on hand for every question you have.



A flexible team that will accommodate projects of any size – from a single chair to a whole school fit-out or refurbishment.



Peace of mind knowing our skilled team have a reassuring 45+ years' experience.



CAD IMAGE

PHOTO OF THE FINISHED SPACE



EXETER SCHOOL

PROJECT School Foyer Refurbishment | **LOCATION** Exeter, Devon



PROJECT OVERVIEW

Exeter School wanted to upgrade and modernise one of the main science labs as a prototype for a major refurbishment programme of its whole science faculty. The existing lab was tired and dated, with poor lighting and ineffective heating. The foyer was uninspiring and in need of being updated to create a bright and welcoming entrance for prospective students and their parents.

Westcountry Group listened carefully to the client's needs and carried out a complete redesign of the science lab presented via our renowned full-colour 3D CAD (computer-aided design) renders and fly-through videos. We then completed the whole fit-out of this area and the foyer. This included: remove and replace the old-fashioned radiators with new air conditioning units; moving of the main doorway into the lab; creation of a teacher demo station with power and gas; designer LED lighting which reflects the science theme of the room; and a teaching wall for students to use for 'live' workings during lessons.



EXETER SCHOOL

PROJECT School Science Lab Refurbishment | **LOCATION** Exeter, Devon



The outcome is a spacious, modern, inspiring science lab which is bright, clean, easy to use, and provides an excellent learning environment for students and a professional teaching area, which has delighted staff and pupils.

The foyer is now bright and welcoming, with multiple colour graphics on the walls, and designer lighting in the stairwell, instantly upgrading the area and vastly improving the visitor experience.

"We are delighted with the refurbishment of our school foyer and physics laboratory in our science building. Westcountry Group really understood the brief after taking time to listen to our requirements, completing the project within tight deadlines and to budget. A real difference has been made to the working space of our teachers and technicians, allowing our pupils to aspire and flourish."

Craig Stewart, Operations Bursar

NEW HALL SCHOOL

PROJECT Food Tech Room Furniture | **LOCATION** Chelmsford, Essex



PROJECT OVERVIEW

New Hall School is a Catholic independent boarding and day school, and they commissioned Westcountry Group to transform their food tech room into a modern classroom environment for the delivery of their food tech curriculum.

Our interior design team provided a full 3D design layout and fly-through video of the client's new food tech room, based in a classic listed building. We supplied and installed a bespoke shelving system, which provides flexible storage options and incorporates a media module containing a large TV for the room. We also included loose chairs and tables to provide a clean desktop area for theory work, matched to the shelving system for a coordinated and consistent look and feel throughout.

Although the school completed the fit out of the space themselves, Westcountry Group provided the robust yet aesthetic furniture, which adds the final finishing touch to this space.



HAYES SCHOOL

PROJECT Sixth Form Common Room Refurbishment | **LOCATION** Bromley, Kent



PROJECT OVERVIEW

Hayes School, part of the 'Impact Multi Academy Trust,' approached Westcountry Group to refurbish their staffroom to improve their wellbeing and staff breakout experience.

The transformation of the schools dated Staffroom and Sixth Form space is emblematic of their commitment to fostering an environment conducive to academic excellence and personal growth. By seamlessly transitioning from secondary education to higher learning, they wanted to entice young minds to pursue their A-levels in a new Sixth Form. The revamped space provides a haven where students can cultivate their independent study skills while fostering connections with peers who share their drive for success.

In collaboration with our client, we meticulously tailored our design to meet their evolving needs, blending comfortable seating arrangements with interactive workspaces on the ground floor and modernised IT facilities on the first floor. Central to our approach was integrating the school's identity into every facet of the design, culminating in a bespoke wall graphic that extends from the interior to the building's façade, making a bold statement visible to all.

Moreover, this revitalized Sixth Form department provided Hayes School with the opportunity to reimagine the staffroom layout, offering an innovative alternative that aligns with the dynamic spirit of their educational ethos. Through our thoughtful design interventions, we have not only transformed the physical space but also nurtured a culture of learning and collaboration that propels the students towards future success.

"Westcountry have created two fantastic spaces at Hayes for both staff and students. Formerly these spaces were unused and unloved areas of school, now they are bright, colourful and in constant use. Working with a company like Westcountry makes embarking on large projects a lot less daunting knowing that you are getting great value, accurate information and fantastic engineers. We have now worked with Westcountry on two separate projects and I look forward to working with them again on the next!"

Greg Short, Facilities Manager

HAYES SCHOOL

PROJECT Staffroom Furniture | **LOCATION** Bromley, Kent



PROJECT OVERVIEW

Following the client's brief and a site visit, we produced one of our signature 3D CAD designs with a proposed layout and colour scheme for their staffroom. Feedback from the client followed and adjustments to the design were made to ensure the perfect balance for the space. The final design included colour-coordinated soft seating and coffee tables for breakout areas. It also includes a staff working area with collaborative tables in multiple shapes and sizes, to add variety and IT benching for focused work.

The staff at Hayes School now benefit from a fully functional, well-designed staffroom that provides the facilities to catch up from one lesson and prepare for the next in equal measure. It's a calming and professional environment, enhancing the wellbeing and productivity of teaching and support professionals with a coordinated colour scheme and high-quality, comfortable furniture.



GREY COURT SCHOOL

PROJECT Classroom Refurbishment | **LOCATION** Richmond, Surrey



PROJECT OVERVIEW

Grey Court School, part of the 'Every Child, Every Day Academy Trust,' commissioned Westcountry Group to convert their existing DT rooms into two classrooms - we were able to start early on this project as the school wanted the work completed during the summer holidays in time for the new academic school year.

We completely refurbished the whole space and fitted a teacher wall in each room to create new inspiring spaces that the school, students and teaching staff needed and would be proud of.

The feedback from the school was very positive and they were very pleased with how the project was managed, stating how easy and accommodating the Westcountry Group team were and how easy they were to work with. 'Their attention to detail and approach during the refurbishment were excellent and they were great at solving and addressing any problems when needed.'



BEXHILL ACADEMY

PROJECT Large Atrium 'Heart Space' Refurbishment | **LOCATION** Bexhill on Sea, East Sussex



PROJECT OVERVIEW

Bexhill Academy had a large atrium area, 'Heart Space', at the centre of the school in need of some inspiration, sound and echo suppression to make the space more appealing and relaxing.

Westcountry Group were delighted to be chosen to renovate this key part of the school. We provided plans, visuals and walkthrough videos so that all stakeholders could review and give feedback. The brief was to provide a 'colourful, evocative and ambient solution for all staff and pupils to enjoy.'

We provided a whole range of soft seating, coffee tables and dining furniture at standard and poseur heights including biophilia with integrated waste bins. Also coloured acoustic baffles that were suspended from the ceiling, plus a special UV resistant fabric so that the seating will maintain its hue over time.

The school were very pleased with the final outcome, it has transformed the space and it now lives up to its name as the 'Heart Space' of the school!



"Bexhill Academy gave three companies a brief outline of what we wanted to achieve in our atrium along with a budget. The Westcountry Group took the brief and came up with some amazing visuals and ideas which answered all our briefs needs and requirements. Working closely with the Academy during the planning and consultation ensured the final concept was delivered seamlessly. Our staff, students and visitors are amazed by the difference it has made to our atrium. It was a pleasure to work with the Westcountry Group and we will certainly want to work with them again."

Lisa Kapllani, Facilities Manager

KNIGHTSBRIDGE SCHOOL

PROJECT Reception and Science Lab Refurbishment | **LOCATION** London



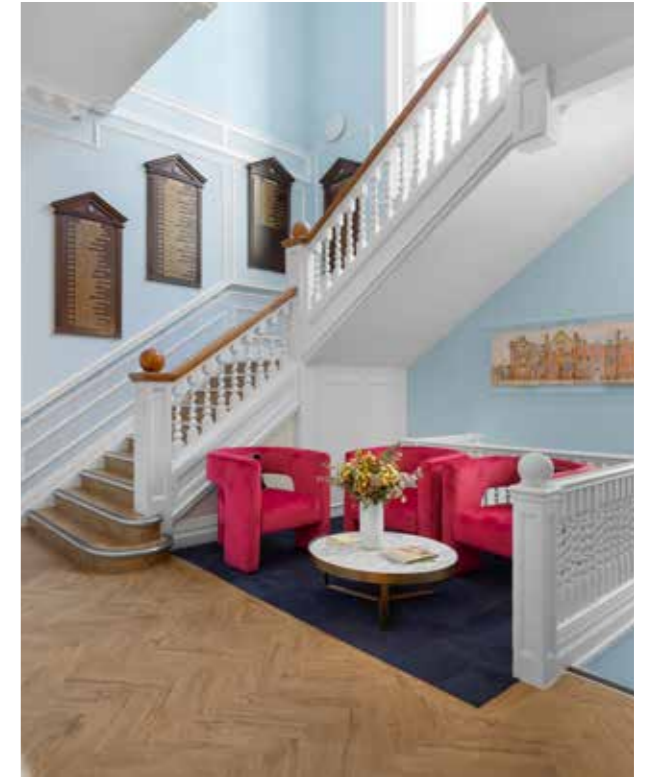
PROJECT OVERVIEW

Knightsbridge is an independent school in central London with high end clientele. They came to Westcountry Group with a need to refurbish their science lab and main reception entrance to make it more appealing and in keeping with this influential area.

We worked closely on the brief with key stakeholders within the school and supplied 3D visuals and walk through videos to help the management team decide on colours and layouts in both areas.

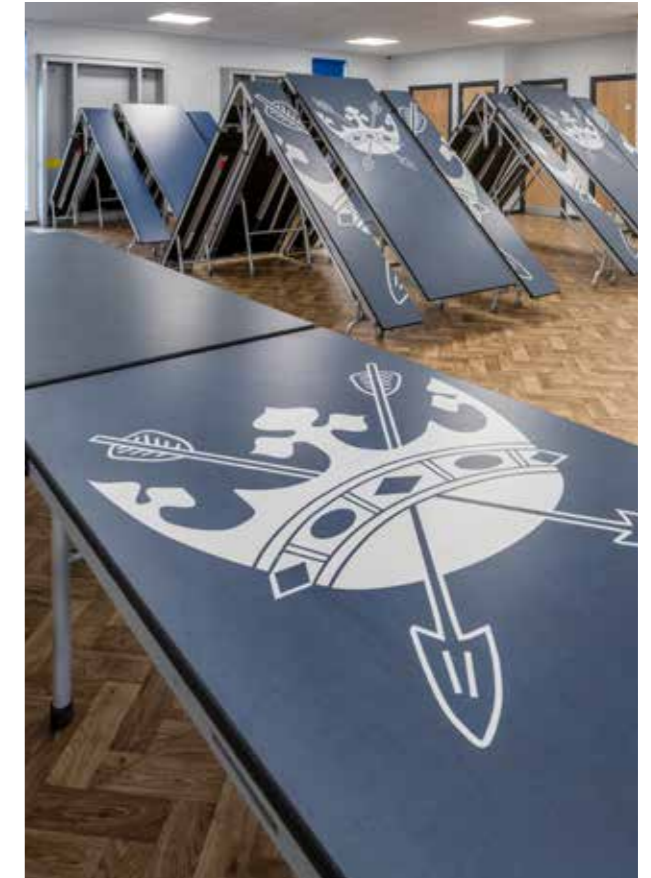
We started the refurbishment at the beginning of the summer holidays and completely renovated both areas in time for the new academic year and pupils return in September. We transformed both spaces into more welcoming and usable areas, which are enjoyed by students, staff and parents.

Feedback was very positive, with students, staff and senior management saying how happy they were with their new reception and science suite. As a result, we will be helping Knightsbridge in the future as they continue to upgrade their school.



ST EDMUND'S SCHOOL

PROJECT Wall Pocket Dining Furniture | **LOCATION** Hindhead, Surrey



PROJECT OVERVIEW

The Wall Pockets have been a great addition to St Edmund's School. The new mobile-dining furniture allows the school to easily transform its space into a versatile area and space for lunchtime dining.

Westcountry Group's Versa Wall Pocket mobile-dining tables, which fold up into unique 'pockets' mounted to the walls, provide a highly efficient and durable dining solution for their new hall ensuring maximum flexibility in this multi-use space.

The bespoke graphics stunningly display the school's logo and the 15-year warranty gives complete assurance that this is a solution which will give them years of service and longevity.

The dining hall is now far more efficient, both in dining capacity and in set-up and set-down times. It is also easier (and faster) to clean up after meals, and dining staff love how much easier it is to operate the spring-assisted folding dining tables.

SHERBORNE GIRLS SCHOOL

PROJECT Dormitory and Dayroom Refurbishment | **LOCATION** Sherborne, Dorset



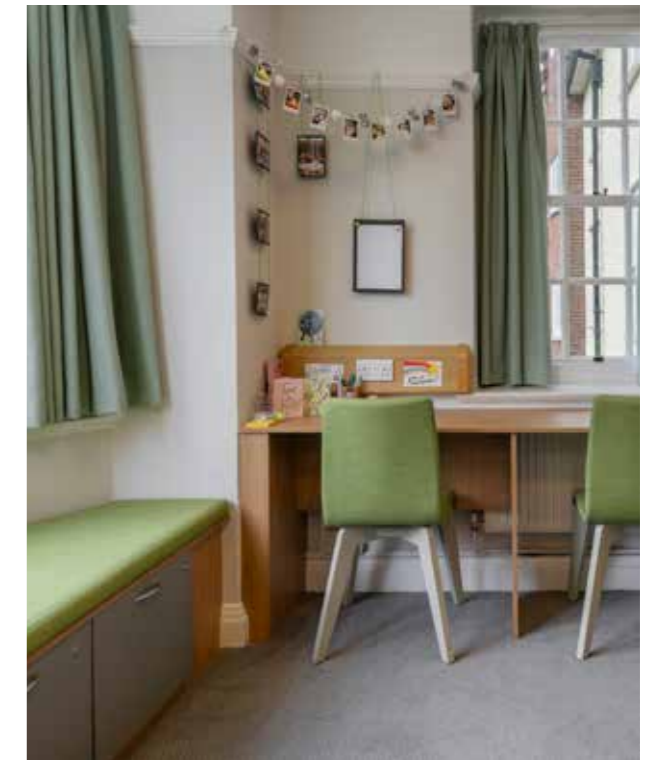
PROJECT OVERVIEW

Westcountry Group worked closely with Sherborne Girls School to create and provide new boarding accommodation and dayroom furniture to improve functionality and aesthetics of the living spaces in their dorm houses.

Bespoke beds, drawer units, day boarder units and other breakout furniture, all provided in a carefully designed colour scheme coordinated by our professional in-house interior design team. Upholstered in a robust fabric for maximum durability this furniture will look stunning for years to come. The new interactive space now provides a sense of togetherness and has created a fun

learning area for the children to engage in small group work and individual activities.

The boarding girls at Sherborne now enjoy homely, robust furniture, in a combination of natural woodgrains and pastel tones, subtly backing up the school's emphasis on pastoral support and care for its students. Providing everything they need to enjoy their home-from-home environment, the way that the girls have taken to their refreshed living quarters are a testament to the vision of the school estates team and the dedicated input from Westcountry Group's designers, project managers and consultants for this project.



KING'S HOUSE SCHOOL

PROJECT Reception Refurbishment | **LOCATION** Richmond, Surrey



PROJECT OVERVIEW

King's House School required our design and refurbishment expertise to renovate their main reception. This area is the main entrance and welcome area to a busy Independent Senior School in a prestigious area. The renovation works also included more-secure built-in storage units for school uniforms and general kit including built-in information screens.

Working closely with the school, our talented design team developed detailed plans and 3D visuals to bring this area to life. Our popular fly-throughs allowed the school to visualise the space before it existed.

Westcountry Group carried out the refurbishment of the space at short notice which had to be completed and ready for the new academic year.

We worked closely with the school's stakeholders to fulfil their aspirations in full and on time!

The renovations to the reception area have created a space that students and staff are really happy with and provides a warm welcome to visitors to the school.

"Westcountry Group were fantastic to work with on our new school lobby. The design stage was engaging, the delivery was efficient, and the post-delivery follow-up showed a genuine care that we were totally satisfied with what they had delivered. Feedback from our staff, parents and pupils has all been fantastic and I would happily work with Westcountry Group in the future."

Will Cullen, Operations Manager

TRURO HIGH SCHOOL FOR GIRLS

PROJECT Sixth Form Centre Refurbishment | **LOCATION** Truro, Cornwall



PROJECT OVERVIEW

As part of their commitment to providing students with top class learning environments, Truro High School for Girls appointed Westcountry Group to revamp the Sixth Form study area.

The school wanted to create a more attractive room to ensure their offering was as appealing as other higher education provisions nearby. An outdated colour scheme and desking needed modernising, along with a need for collaborative soft seating to make the area more welcoming and a destination of choice for study.

Westcountry Group listened carefully to the client's needs and wishes and then did a complete redesign of the area. This was conveyed through our superb full-colour 3D renders and fly-through videos.

Modern stylish study hubs were manufactured to suit the layout of the room, maximising numbers without cramming the area, in a pleasant sage green finish, with contrasting pastel blue and pink chairs to complement. High-backed pod seating was installed into the window bay area giving a comfortable, inclusive seating arrangement for students to relax in.

The result, was a pleasant, modern study space, which has demonstrated the school's value of its Sixth Form students through investing in new facilities for them. The décor is pleasing on the eye as well as being practical and functional, making the area an ideal place to study outside of lesson times.



THE STONEHENGE SCHOOL

PROJECT Dining Room and Furnishings | **LOCATION** Salisbury, Wiltshire



PROJECT OVERVIEW

The Stonehenge School asked Westcountry Group to supply and carry out the installation of new loose dining furniture to smarten up the dining space, significantly improve the student dining experience and increase capacity.

Statik Hoop dining tables with matching benches, in a bright and clean colour scheme were chosen to elevate the dining experience. An initial 3D design, complete with our immersive fly-through video was created and approved by the client prior to the project starting. This enabled the client to get stakeholders on board and ensuring absolute clarity of the proposed solution.

We created an inspirational space for students who now have a refreshed, vibrant dining experience, with high quality furniture and a bright design aesthetic. Hygiene is improved through the use of water-resistant and easy-to-clean tops on all tables and benches, which are manufactured from heavy duty laminate. The open style of the furniture makes it easier for staff to clean the floor too.

“We have enjoyed working with Westcountry Group on a number of projects across our site over the last few years. They always offer such a personal service to us and their design work is always full of inspirational ideas with colours that complement each other, and furniture that is practical but also delivers a really modern feel to the environment. Thanks to Westcountry Group, the dining hall project really provided our students with the ‘wow factor’ when they returned to school after the summer holidays. We look forward to working with Westcountry Group on future projects.”

Jo Wakeham, Business Manager





South West Office

Cranmere House
Darklake View
Plymouth
Devon, PL6 7TW
T: 01752 696300

South East Office

Warne House
Central Way
Andover
Hampshire, SP10 5AN
T: 01264 303103



SALES@WESTCOUNTRYGROUP.COM | WWW.WESTCOUNTRYGROUP.COM

